



Microsoft Dynamics™ GP
Planning for Security

Copyright

Copyright © 2007 Microsoft Corporation. All rights reserved.

Complying with all applicable copyright laws is the responsibility of the user. Without limiting the rights under copyright, no part of this document may be reproduced, stored in or introduced into a retrieval system, or transmitted in any form or by any means (electronic, mechanical, photocopying, recording, or otherwise), or for any purpose, without the express written permission of Microsoft Corporation. Notwithstanding the foregoing, the licensee of the software with which this document was provided may make a reasonable number of copies of this document solely for internal use.

Trademarks

Microsoft, Active Directory, Dexterity, Excel, Microsoft Dynamics, Windows, Windows NT, and Windows Server are either registered trademarks or trademarks of Microsoft Corporation or its affiliates in the United States and/or other countries. FairCom and c-tree Plus are trademarks of FairCom Corporation and are registered in the United States and other countries.

The names of actual companies and products mentioned herein may be trademarks or registered marks - in the United States and/or other countries - of their respective owners.

Unless otherwise noted, the example companies, organizations, products, domain names, e-mail addresses, logos, people, places, and events depicted herein are fictitious. No association with any real company, organization, product, domain name, e-mail address, logo, person, place, or event is intended or should be inferred.

Intellectual property

Microsoft may have patents, patent applications, trademarks, copyrights, or other intellectual property rights covering subject matter in this document. Except as expressly provided in any written license agreement from Microsoft, the furnishing of this document does not give you any license to these patents, trademarks, copyrights, or other intellectual property.

Warranty disclaimer

Microsoft Corporation disclaims any warranty regarding the sample code contained in this documentation, including the warranties of merchantability and fitness for a particular purpose.

Limitation of liability

The content of this document is furnished for informational use only, is subject to change without notice, and should not be construed as a commitment by Microsoft Corporation. Microsoft Corporation assumes no responsibility or liability for any errors or inaccuracies that may appear in this manual. Neither Microsoft Corporation nor anyone else who has been involved in the creation, production or delivery of this documentation shall be liable for any indirect, incidental, special, exemplary or consequential damages, including but not limited to any loss of anticipated profit or benefits, resulting from the use of this documentation or sample code.

License agreement

Use of this product is covered by a license agreement provided with the software product. If you have any questions, please call the Microsoft Dynamics GP Customer Assistance Department at 800-456-0025 (in the U.S. or Canada) or +1-701-281-6500.

Publication date

April 2007

Contents

Introduction	1
What's in this document	1
Symbols and conventions	2
Resources available from the Help menu	2
Send us your documentation comments	4
Chapter 1: Basic security recommendations	5
These steps must be taken to secure this installation of Microsoft Dynamics GP	5
Physical security	6
Employees	7
System administrators	7
Security patch management	8
Microsoft Dynamics GP service packs	9
Client-side security patches	9
Chapter 2: Securing the server operating system	11
Server operating system security	11
Authentication	12
Password protection	12
Strong passwords	12
Defining the password policy	14
Defining an account lockout policy	15
Access control	15
Single sign-on	17
External security firewall	17
ISA Server 2000	17
Additional security settings for SQL Server	18
Chapter 3: Network security	21
Strategies for network security	21
Wireless networks	22
Network security scenarios	23
Chapter 4: Virus protection	27
Overview of viruses	27
Types of viruses	27
Chapter 5: Microsoft Dynamics GP security	29
Areas that are affected by security settings	29
Granting security access	30
How passwords are used in Microsoft Dynamics GP	31
Items that you can set security for	31
Application security	32
Microsoft Dynamics GP Utilities security	33
Office Smart Tags	33
Security troubleshooting	34

Chapter 6: The Microsoft Dynamics GP database security model.....	35
Password security	35
DYNGRP database role.....	35
SysAdmin fixed server role	36
SQL Server fixed database roles beginning with “rpt_”	36
Chapter 7: Core application security tasks.....	37
Creating user records	37
Deleting user records.....	38
Granting user access	38
Backing up databases	39
Restoring databases	39
Business Alerts	39
SQL maintenance	40
Deleting companies	40
Deleting stranded user accounts	40
Chapter 8: Frequently asked questions.....	41
User accounts.....	41
Microsoft Dynamics GP windows.....	41
Security in Microsoft Dynamics GP	42

Introduction

Use the information in this document to help you plan for security within Microsoft Dynamics™ GP.

This introduction is divided into the following sections:

- [What's in this document](#)
- [Symbols and conventions](#)
- [Resources available from the Help menu](#)
- [Send us your documentation comments](#)

What's in this document

This document is designed to make you aware of actions that you can complete to help make your Microsoft Dynamics GP data as secure as possible.

Microsoft® Windows®, the foundation of Microsoft Dynamics GP, provides sophisticated standards-based network security. In the broadest sense, security involves planning and considering tradeoffs. For example, a computer can be locked in a vault and only accessible to one system administrator. This computer may be secure, but it is not very usable because it is not connected to any other computer. You need to consider how to make the network as secure as possible without sacrificing usability.

Most organizations plan for external attacks and construct firewalls, but many companies do not consider how to mitigate a security breach once a malicious user gets inside the firewall. Security measures in your organization's environment will work well if users are not required to perform too many procedures and steps to conduct business in a secure manner. Implementing security policies should be as easy as possible for users or they will tend to find less secure ways of doing things.

Since the size of Microsoft Dynamics GP implementations can vary a great deal, it is important to carefully consider the needs of a smaller business and to weigh the effectiveness of security against the costs that may be involved. Use your best judgment to recommend a policy that helps to meet security needs.



The document is divided into the following information:

- [Chapter 1, "Basic security recommendations,"](#) provides some basic security recommendations for you to complete to help make your Microsoft Dynamics GP data as secure as possible.
- [Chapter 2, "Securing the server operating system,"](#) provides information about securing the server operating system.
- [Chapter 3, "Network security,"](#) provides information about securing your network.
- [Chapter 4, "Virus protection,"](#) provides information about the different types of viruses that exist and what you can do to help keep your computers from being infected by a virus.
- [Chapter 5, "Microsoft Dynamics GP security,"](#) provides an overview of the security features available in Microsoft Dynamics GP.

- [Chapter 6, “The Microsoft Dynamics GP database security model,”](#) provides information about the Microsoft Dynamics GP database security model.
- [Chapter 7, “Core application security tasks,”](#) lists the most secure options for completing common security tasks in Microsoft Dynamics GP.
- [Chapter 8, “Frequently asked questions,”](#) contains answers to frequently asked questions about security in Microsoft Dynamics GP.

Symbols and conventions

This document uses the following symbols to draw information to your attention.

Symbol	Description
	The light bulb symbol indicates helpful tips, shortcuts and suggestions.
	The warning symbol indicates situations you should be especially aware of when completing tasks.

This document uses the following conventions to refer to sections, navigation and other information.

Convention	Description
<i>Creating a batch</i>	Italicized type indicates the name of a section or procedure.
File >> Print or File > Print	The (>>) or (>) symbol indicates a sequence of actions, such as selecting items from a menu or toolbar, or pressing buttons in a window. This example directs you to go to the File menu and choose Print.
TAB or ENTER	All capital letters indicate a key or a key sequence.

Resources available from the Help menu

The Microsoft Dynamics GP Help menu gives you access to user assistance resources on your computer, as well as on the Web.

Contents

Opens the Help file for the active Microsoft Dynamics GP component, and displays the main “contents” topic. To browse a more detailed table of contents, click the Contents tab above the Help navigation pane. Items in the contents topic and tab are arranged by module. If the contents for the active component includes an “Additional Help files” topic, click the links to view separate Help files that describe additional components.

To find information in Help by using the index or full-text search, click the appropriate tab above the navigation pane, and type the keyword to find.

To save the link to a topic in the Help, select a topic and then select the Favorites tab. Click Add.

Index

Opens the Help file for the active Microsoft Dynamics GP component, with the Index tab active. To find information about a window that's not currently displayed, type the name of the window, and click Display.

About this window

Displays overview information about the current window. To view related topics and descriptions of the fields, buttons, and menus for the window, choose the appropriate link in the topic. You also can press F1 to display Help about the current window.

Lookup

Opens a lookup window, if a window that you are viewing has a lookup window. For example, if the Checkbook Maintenance window is open, you can choose this item to open the Checkbooks lookup window.

Show Required Fields

Highlights fields that are required to have entries. Required fields must contain information before you can save the record and close the window. You can change the font color and style used to highlight required fields. On the Microsoft Dynamics GP menu, choose User Preferences and then choose Display.

Printable Manuals

Displays a list of manuals in Adobe Acrobat .pdf format, which you can print or view.

Orientation Training

Accesses online tutorials that show you how to complete basic procedures within Microsoft Dynamics GP. Additional tutorials are available through the CustomerSource Web site.

What's New

Provides information about enhancements that were added to Microsoft Dynamics GP since the last major release.

Microsoft Dynamics GP Online

Opens a Web page that provides links to a variety of Web-based user assistance resources. Access to some items requires registration for a paid support plan.

Customer Feedback Options

Provides information about how you can join the Customer Experience Improvement Program to improve the quality, reliability, and performance of Microsoft software and services.

Send us your documentation comments

We welcome comments regarding the usefulness of the Microsoft Dynamics GP documentation. If you have specific suggestions or comments about this document, send your comments by e-mail to the following address: bizdoc@microsoft.com.

To send comments about specific topics from within Help, click the Documentation Feedback link, which is located at the bottom of each Help topic.

Note: By offering any suggestions to Microsoft, you give Microsoft full permission to use them freely.

Chapter 1: Basic security recommendations

The following information contains security recommendations that you should consider before setting up Microsoft Dynamics GP.

This information is divided into the following sections.

- [*These steps must be taken to secure this installation of Microsoft Dynamics GP*](#)
- [*Physical security*](#)
- [*Employees*](#)
- [*System administrators*](#)
- [*Security patch management*](#)
- [*Microsoft Dynamics GP service packs*](#)
- [*Client-side security patches*](#)

These steps must be taken to secure this installation of Microsoft Dynamics GP



In order to protect your Microsoft Dynamics GP environment, you must take steps to secure communications between the Microsoft Dynamics GP client and Microsoft SQL Server™. Failure to adhere to this guidance will leave your installation of Microsoft Dynamics GP susceptible to a number of serious security threats.

If you are using Microsoft SQL Server 2000, it is necessary that you use Secure Sockets Layer (SSL) protocol certificates to secure the communication link between the Microsoft Dynamics GP client and Microsoft SQL Server 2000. When you configure SQL Server for SSL, all of the data transmitted between client and server (and vice versa) needs to be encrypted to ensure that data remains confidential while in transit between the client and the SQL Server. If you currently do not use SSL Certificates, you must go to Microsoft Certificate Services to request them.

We also recommend that you follow the instructions in the Microsoft SQL Server 2000 Books Online manual to secure the communication link between SQL server and a client machine.

Microsoft SQL Server 2005 encrypts the pre-login credential exchange by default but to encrypt the entire session of communication between SQL Server 2005 and Microsoft Dynamics GP, you will need to follow the instructions in the Microsoft SQL Server 2005 Books Online manual.

For more information about securing your network, refer to the following Web sites:

Securing data access

<http://msdn2.microsoft.com/en-us/library/aa302392.aspx>

Using SSL certificates to have all client/server based communication encrypted

<http://msdn2.microsoft.com/en-us/library/aa302414.aspx>

Using Microsoft SQL Server 2005

<http://www.microsoft.com/sql/2005/default.mspx>

In order to run a secure Microsoft Dynamics GP environment, you need to follow some general rules for administration:

- Assuming that the business owner or manager has administrative privileges, users, such as accounts payable coordinators, cashiers, or sales representatives, do not need administrative privileges over the domain. These user accounts should be restricted to Domain Users.
- Passwords should not be reused. It is often common practice to reuse passwords across systems and domains. For example, an administrator responsible for two domains might create domain administrator accounts in each that use the same password, and even set local administrator passwords on domain computers that are the same across the domain. In such a case, a compromise of a single account or computer can lead to a compromise of the entire domain.
- Domain administrator accounts should not be used as service accounts. It is also common practice to use domain administrator accounts as service accounts for common services such as backing up systems. However, this poses a security risk because the password must be stored, or cached, locally on every computer where the service resides. The password can easily be retrieved by anyone with administrative rights over the computer. In such a case, the compromise of one computer can lead to the compromise of the entire domain. Service accounts should never be domain administrator accounts, and they should be limited in privilege as much as possible.
- Although Microsoft Dynamics GP is supported on several operating systems, it is best to use the latest operating systems with the most up-to-date security features. Also, operating system editions that are for business purposes typically have more security features.
- Use the Windows Update tool provided with Windows 2000, Windows XP, and Windows Server® 2003 to maintain the most current security patches.
- If you plan to use Microsoft Dynamics GP Business Portal, we recommend that you implement the security recommendations mentioned in the Business Portal Installation Guide, which can be found on the CustomerSource Web site.



The remainder of this document contains recommendations on various methods to improve the security of your Microsoft Dynamics GP installation. Although these recommendations are strongly encouraged, they are not mandatory.

Physical security

Physical security represents the best place to start preventing malicious attacks. For example, if a hard disk drive is stolen, eventually the data on that drive will be stolen, as well. Discuss the following physical security issues when developing a policy with users:

- For larger deployments with dedicated IT departments, ensure that server rooms and places where software and manuals are stored are locked.
- Keep unauthorized users away from the power and reset switches on the server.
- Consider removing any removable storage devices, including CD burners, from client workstations.
- Ensure that burglar alarms are installed, regardless of how sensitive the data is.

- Ensure that backups of critical data are stored offsite and that software is stored in fire and waterproof containers when not in use.

Employees

It is a good idea to limit administrative rights across all products and features. By default, you should give employees read-only access to system functions, unless they require greater access to perform their jobs. We recommend following the principle of least privilege: give users only the minimum privileges required to access data and functionality. For example, avoid requiring administrative rights to run features.

Disgruntled and former employees are a threat to network security. We recommend using the following policy regarding employees:

- Conduct pre-employment background investigations.
- Expect “revenge” from disgruntled employees and former employees.
- Make sure that you inactivate all associated Windows accounts and passwords when an employee leaves. For reporting purposes, do not delete users.
- Train users to be alert and to report suspicious activity.
- Do not grant privileges automatically. If users do not need access to particular computers, computer rooms, or sets of files, ensure that they do not have access.
- Train supervisors to identify and respond to potential employee problems.
- Monitor system usage for unusual activity.
- Make sure that employees understand their roles in maintaining network security.
- Give a copy of the company policies to every employee.
- Do not allow users to install their own software.

System administrators

We highly recommend that system administrators keep up with the latest security fixes available from Microsoft. Hackers are very adept at combining small bugs to enable large intrusions into a network. Administrators should first ensure that each individual computer is as secure as possible, and then add security updates and patches. To that end, many links and resources are provided throughout this guide to help in finding security-related information and best practices.

Complexity introduces another set of tradeoffs for securing your network. The more complex the network, the more difficult it will be to secure or fix it once an intruder has successfully gained access. The administrator should document the network topography thoroughly, and work toward keeping it as simple as possible.

Security primarily involves risk management. Using technology alone won't guarantee security. Effective security requires a combination of technology and policy. That is, security ultimately depends upon the way technology is used. Microsoft delivers security-conscious technology and features, but only the

administrator and the management can determine the right policies for each organization. Be sure to plan for security early in the implementation and deployment process. Understand what your company needs to protect and what it is willing to do to protect it.

Also, develop contingency plans for emergencies before they happen and combine thorough planning with solid technology. For more information about general security, see “The Ten Immutable Laws of Security Administration,” located at <http://www.microsoft.com/technet/archive/community/columns/security/essays/10salaws.mspx>.

Security patch management

Operating systems and applications are often immensely complex. They can consist of millions of lines of code, written by many different programmers. It is essential that the software works reliably and does not compromise the security or stability of the IT environment. To minimize any problems, programs are tested thoroughly before release. However, attackers continually strive to find weaknesses in software, so anticipating all future attacks is not possible.

For many organizations, patch management will form a part of their overall change and configuration management strategy. However, whatever the nature and size of the organization, it is vital to have a good patch management strategy, even if the organization does not yet have effective change and configuration management in place. The vast majority of successful attacks against computer systems occur to those systems where security patches have not been installed.

Security patches present a specific challenge to most organizations. Once a weakness has been exposed in software, attackers will generally spread information about it quickly throughout the hacker community. When a weakness occurs in its software, Microsoft will strive to release a security patch as soon as possible. Until the patch is deployed, the security the user depends upon and expects may be severely diminished.

In the Windows environment, you must ensure that you have the most recent security patches throughout your system. To ease this task, you should consider using the technologies that Microsoft has made available. These include:

Microsoft Security Notification Service The Security Notification Service is an e-mail list that distributes notices whenever an update becomes available. These notices serve as a valuable piece of a proactive security strategy. They are also available at the TechNet Product Security Notification Web site: <http://www.microsoft.com/technet/security/bulletin/notify.mspx>.

Microsoft Security Bulletin Search Tool The Security Bulletin search tool is available at the HotFix & Security Bulletin Service Web site. You can determine which updates that you need based on the operating system, applications, and service packs that you are currently running. For more information about the Microsoft Security Bulletin Search Tool, see <http://www.microsoft.com/technet/security/current.aspx>.

Microsoft Baseline Security Analyzer (MBSA) This graphical tool is available at the Microsoft Baseline Security Analyzer Web site. This tool works by comparing the current status of a computer against a list of updates maintained by Microsoft. MBSA also performs some basic security checks for password strength and expiration settings, guest account policies, and a number of other areas. MBSA

also will look for vulnerabilities in Microsoft Internet Information Services (IIS), Microsoft SQL Server 2000, Microsoft Exchange 5.5, Microsoft Exchange 2000, and Microsoft Exchange Server 2003. For more information about the Microsoft Baseline Security Analyzer, see <http://www.microsoft.com/technet/security/tools/mbsahome.mspx>.

Windows Server Update Services (WSUS) Formerly known as Windows Update Corporate Edition and Software Update Services, this tool enables enterprises to host on local computers all critical updates and security rollup packages (SRPs) available on the public Windows Update site. This tool works with a new release of automatic update (AU) clients to form the basis for a powerful automatic download and install strategy. The new AU client set includes a client for Windows 2000 and Windows Server 2003 operating systems and has the ability to automatically install downloaded updates. For more information about Microsoft WSUS, see <http://www.microsoft.com/windowsserversystem/updateservices/default.mspx>.

Microsoft Systems Management Server (SMS) Software Update Services Feature Pack The SMS Software Update Services Feature Pack contains a number of tools aimed at easing the process of issuing software updates throughout the enterprise. The tools include a Security Update Inventory Tool, a Microsoft Office Inventory Tool for Updates, the Distribute Software Updates Wizard, and an SMS Web Reporting Tool with Web Reports Add-in for Software Updates. For more information about each tool, see <http://www.microsoft.com/smsserver/downloads/20/featurepacks/suspack/>.

We recommend that you consider each of these security tools and encourage their use. It is very important that security issues are addressed as quickly as possible, while maintaining the stability of the environment.

Microsoft Dynamics GP service packs

Microsoft Dynamics GP security patches are released as part of service packs. Service Packs are located in the Downloads and Updates area of the CustomerSource Web site. You should regularly check this site to ensure that you are fully up to date on any security issues specifically affecting Microsoft Dynamics GP. Up-to-date instructions on upgrading to the most recent release of Microsoft Dynamics GP can be found at <http://go.microsoft.com/fwlink/?LinkID=79222>.

Client-side security patches

Microsoft Dynamics GP users can ensure that their client computers are current on security patches for Microsoft Windows 2000, Windows XP, and Windows Server 2003 by using the Windows Update tool provided with these systems. Also, if Microsoft Security Update Services is installed on the server, much of the update process can be automated internally in by the organization's IT department. The Microsoft Security Notification Service will send details of all SQL Server 2000 security patches.

Chapter 2: Securing the server operating system

The following information provides some of the best practices for securing server operating systems. This information should be considered before you implement Microsoft Dynamics GP.

This information is divided into the following sections.

- [*Server operating system security*](#)
- [*Authentication*](#)
- [*Password protection*](#)
- [*Strong passwords*](#)
- [*Defining the password policy*](#)
- [*Defining an account lockout policy*](#)
- [*Access control*](#)
- [*Single sign-on*](#)
- [*External security firewall*](#)
- [*ISA Server 2000*](#)
- [*Additional security settings for SQL Server*](#)

Server operating system security

Some smaller businesses do not have a server operating system. Nevertheless, it is important for managers of small businesses to understand many of the same security best practices that apply to larger businesses with more complex network environments. Be aware that many of the policies and practices throughout this document can easily be applied to businesses with only client operating systems.

The concepts in this section apply to both the Microsoft Windows 2000 Server and Microsoft Windows Server 2003 products, although the source of this information is mainly from Windows Server 2003 Online Help. Windows Server 2003 offers a robust set of security features. Windows Server 2003 Online Help contains complete information about all security features and procedures.

For additional information for Windows 2000 Server, visit the Windows 2000 Server Security Center, located at <http://www.microsoft.com/technet/security/prodtech/win2000/default.mspx>.

For Windows Server 2003, Microsoft has published the “Windows Server 2003 Security Guide,” located at <http://www.microsoft.com/technet/security/prodtech/win2003/w2003hg/sgch00.mspx>

The most important features of the Windows server security model are authentication, access control, and single sign-on, as described below.

- Authentication represents the process by which the system validates a user’s identity through his or her login credentials. A user’s name and password are compared against an authorized list. If the system detects a match, access is granted to the extent specified in the permissions list for that user.
- Access control limits user access to information or computing resources based on the users’ identity and their membership in various predefined groups. Access control is typically used by system administrators for controlling user access to network resources such as servers, directories, and files, and is

typically implemented by granting permissions to users and groups for access to specific objects.

- Single sign-on allows a user to log in to the Windows domain once, using a single password, and authenticate to any computer in the Windows domain. Single sign-on enables administrators to implement secure password authentication across the Windows network, while providing end users with ease of access.

The following topics provide a more detailed description of these three key features for securing your computing environment.

Authentication

Authentication is a fundamental aspect of system security. It confirms the identity of any user trying to log in to a domain or access network resources. The weak link in any authentication system is the user's password.

Passwords provide the first line of defense against unauthorized access to the domain and local computers. We recommend using password best practices, where appropriate, for your organization. For more information, refer to [Password protection](#) on page 12, [Strong passwords](#) on page 12, and [Defining the password policy](#) on page 14.

Password protection

It always is important that users use passwords and follow these password recommendations.

- Always require strong passwords. For more information, see [Strong passwords](#) on page 12.
- If passwords must be written down on a piece of paper, store the paper in a secure place and destroy it when it is no longer needed.
- Never share passwords with anyone.
- Use different passwords for all user accounts.
- Change passwords immediately if they have been compromised.
- Be careful about where passwords are saved on computers. Some dialog boxes, such as those for remote access and other telephone connections, present an option to save or remember a password. Selecting this option poses a potential security threat because the password is stored in the system registry.

Strong passwords

The role that passwords play in securing an organization's network is often underestimated and overlooked. As mentioned, passwords provide the first line of defense against unauthorized access to your organization. The Windows Server 2003 family has a new feature that checks the complexity of the password for the Administrator account during the setup of the operating system. If the password is blank or does not meet complexity requirements, the Windows Setup dialog box

appears, warning of the dangers of not using a strong password for the Administrator account.

In a workgroup environment, a user will not be able to access a computer over the network using an account with a blank password. Weak passwords provide attackers with easy access to computers and the network, while strong passwords are considerably harder to crack, even with the password-cracking software that is available today.

Password-cracking tools continue to improve, and the computers used to crack passwords are more powerful than ever. Password-cracking software uses one of three approaches: intelligent guessing, dictionary attacks, and brute-force automated attacks that try every possible combination of characters. Given enough time, the automated method can crack any password. However, strong passwords are much harder to crack than weak passwords. A secure computer has strong passwords for all user accounts.

A weak password

- Is no password at all.
- Contains the user's user name, real name, or company name.
- Contains a complete dictionary word. For example, the word Password is a weak password.

A strong password

- Is at least seven characters long.
- Does not contain the user's name, real name, or company name.
- Does not contain a complete dictionary word.
- Is significantly different from previous passwords. Passwords that increment (Password1, Password2, Password3...) are not strong.
- Contains characters from each of the four groups listed in the following table.

Group	Example
Uppercase letters	A B C D
Lowercase letters	a b c d
Numerals	0 1 2 3 4
Symbols	' ~ @ # \$ % ^ & * () _ + - = { } [] \ : " ; < > ? , . /

Examples of strong passwords are Pa\$sw0rD and J*p2le04>F.

A password can meet most of the criteria of a strong password but still be rather weak. For example, Hello2U! is a relatively weak password even though it meets most of the criteria for a strong password and also meets the complexity requirements of password policy. H!e!Z!2o is a strong password because the dictionary word is interspersed with symbols, numbers, and other letters. It is important to educate all users about the benefits of using strong passwords and to teach them how to create passwords that are actually strong.

Passwords can be created containing characters from the extended ASCII character set. Using extended ASCII characters increases the number of characters that users can choose when they create passwords. As a result, it might take more time for password-cracking software to crack passwords that contain these extended ASCII characters than it does to crack other passwords. Before using extended ASCII characters in a password, test them thoroughly to make sure that passwords containing extended ASCII characters are compatible with other applications that the organization uses. Be especially cautious about using extended ASCII characters in passwords if the organization uses several different operating systems.

You can find extended ASCII characters in the Character Map. Some extended ASCII characters should not be used in passwords. Do not use a character if a keystroke is not defined for it in the lower-right corner of the Character Map dialog box. For more information about how to use Character Map, see Windows Server Online Help.

Examples of passwords that contain characters from the extended ASCII character set are kUμ!0o and Wf©\$0k#"gα5ªrd.

You can implement a password policy that enforces password complexity requirements. For more information about this policy, see “Password Must Meet Complexity Requirements” in Windows Server Online Help.

Windows passwords can be up to 127 characters long. However, if you are on a network that also has computers running Windows 98, consider using passwords that are not longer than 14 characters. Microsoft Windows 98 supports up to 14 characters. If a password is longer, users might not be able to log in to the network from those computers.

Defining the password policy

When defining a password policy, be sure to create a policy that will require all user accounts to have strong passwords. The following Windows Server settings require strong passwords.

- Define the Enforce password history policy setting so that several previous passwords are remembered. With this policy setting, users cannot use the same password when their password expires.
- Define the Maximum password age policy setting so that passwords expire as often as necessary for the client’s environment, typically, every 30 to 90 days.
- Define the Minimum password age policy setting so that passwords cannot be changed until they are more than a certain number of days old. This policy setting works in combination with the Enforce password history policy setting. If a minimum password age is defined, users cannot repeatedly change their passwords to get around the Enforce password history policy setting and then use their original passwords. Users must wait the specified number of days to change their passwords.
- Define a Minimum password length policy setting so that passwords must consist of at least a specified number of characters. Long passwords—seven or more characters—are usually stronger than short ones. With this policy setting, users cannot use blank passwords and they need to create passwords that are at least a certain number of characters long.

- Enable the Password must meet complexity requirements policy setting. This policy setting checks all new passwords to ensure that they meet basic strong password requirements. For a full list of these requirements, see “Password Must Meet Complexity Requirements” in Windows Server Online Help.

Defining an account lockout policy

Be cautious when defining the account lockout policy. The account lockout policy should not be set haphazardly. Although the probability of thwarting an unauthorized attack on your organization is increased with account lockout policy, it is possible to also unintentionally lock out authorized users, which can be very costly for your organization.

If you decide to apply account lockout policy, set the Account lockout threshold policy setting to a high enough number that authorized users are not locked out of their user accounts simply because they type a password incorrectly.

Authorized users can be locked out if they change their passwords on one computer, but not on another computer. The computer that is still using the old password will continuously attempt to authenticate the user with the old password, and it will eventually lock out the user account. This might be a costly consequence of defining account lockout policy, because the authorized users cannot access network resources until their accounts are restored. This issue does not exist for organizations that use only domain controllers that are members of Windows Server family.

For more information about account lockout policy, see “Account Lockout Policy Overview” in Windows Server Online Help. For information about how to apply or modify account lockout policy, see “To Apply or Modify Account Lockout Policy,” also in Windows Server Online Help.

Access control

A Windows network and its resources can be secured by considering what rights that users, groups of users, and other computers have on the network. You can secure a computer or multiple computers by granting users or groups specific user rights. You can secure an object, such as a file or folder, by assigning permissions to allow users or groups to perform specific actions on that object. The following key concepts make up access control:

- Permissions
- Ownership of objects
- Inheritance of permissions
- User rights
- Object auditing

Permissions

Permissions define the type of access granted to a user or group for an object or object property such as files, folders, and registry objects. Permissions are applied to any secured objects such as files or registry objects. Permissions can be granted to any user, group, or computer. It is a good practice to assign permissions to groups.

Ownership of objects

An owner is assigned to an object when that object is created. By default in Windows 2000 Server, the owner is the creator of the object. This has changed in Windows Server 2003 for objects created by members of the Administrators group.

When a member of the Administrators group creates an object in Windows Server 2003, the Administrators group becomes the owner, rather than the individual account that created the object. This behavior can be changed through the Local Security Settings Microsoft Management Console (MMC) snap-in, using the setting System objects: Default owner for objects created by members of the Administrators group. No matter what permissions are set on an object, the owner of the object can always change the permissions on an object. For more information, see “Ownership” in Windows Server Online Help.

Inheritance of permissions

Inheritance allows administrators to easily assign and manage permissions. This feature automatically causes objects within a container to inherit all the inheritable permissions of that container. For example, the files within a folder, when created, inherit the permissions of the folder. Only permissions marked to be inherited will be inherited.

User rights

User rights grant specific privileges and login rights to users and groups in your computing environment. For information about user rights, see “User Rights” in Windows Server Online Help.

Object auditing

You can audit users’ access to objects. You can then view these security-related events in the security log using the Event Viewer. For more information, see “Auditing” in Windows Server Online Help.

Access control best practices

Use the following information when you are assigning or denying access to the server operating system.

- Assign permissions to groups rather than to users. Because it is inefficient to maintain user accounts directly, assigning permissions on a user basis should be the exception.
- Use Deny permissions for certain special cases. For instance, you can use Deny permissions to exclude a subset of a group that has Allow permissions. Use Deny permissions to exclude one special permission when you have already granted full control to a user or group.
- Never deny the Everyone group access to an object. If you deny everyone permission to an object, that includes administrators. A better solution would be to remove the Everyone group, as long as you give other users, groups, or computers permissions to that object.
- Assign permissions to an object as high on the tree as possible and then apply inheritance to propagate the security settings through the tree. You can quickly and effectively apply access control settings to all children or a subtree of a parent object. By doing this, you gain the greatest breadth of effect with the least

effort. The permission settings that you establish should be adequate for the majority of users, groups, and computers.

- Explicit permissions can sometimes override inherited permissions. Inherited Deny permissions do not prevent access to an object if the object has an explicit Allow permission entry. Explicit permissions take precedence over inherited permissions, even inherited Deny permissions.
- For permissions on Active Directory[®] objects, be sure that you understand the best practices specific to Active Directory objects. For more information, see “Best Practices for Assigning Permissions on Active Directory Objects” in Windows Server 2003 Online Help.

Single sign-on

A key feature of Windows Server family authentication is its support of single sign-on. Single sign-on allows a user to log in to the Windows domain once, using a single password, and authenticate to any computer in the Windows domain without having to reenter that password.

Single sign-on provides two main security benefits. For a user, the use of a single password or smart card reduces confusion and improves work efficiency. For administrators, the amount of administrative support required for domain users is reduced, because the administrator needs to manage only one account per user.

Authentication, including single sign-on, is implemented as a two-part process: interactive logon and network authentication. Successful user authentication depends on both of these processes. For more information about how to configure the Windows single sign-on feature, see Windows Server Online Help.

External security firewall

A firewall is hardware or software that prevents data packets from either entering or leaving a specified network. To control the flow of traffic, numbered ports in the firewall are either opened or closed to information packets. The firewall looks at several pieces of information in each arriving or departing packet:

- The protocol through which the packet is being delivered
- The destination or sender of the packet
- The type of content that is contained in the packet
- The port number to which it is being sent

If the firewall is configured to accept the specified protocol through the targeted port, the packet is allowed through. Microsoft Windows Small Business Server 2003 Premium Edition ships with Microsoft Internet Security and Acceleration (ISA) Server 2000 as its firewall solution.

ISA Server 2000

Internet Security and Acceleration (ISA) Server 2000 securely routes requests and responses between the Internet and client computers on the internal network.

ISA Server acts as the secure gateway to the Internet for clients on the local network. The ISA Server computer is transparent to the other parties in the communication path. The Internet user should not be able to tell that a firewall server is present,

unless the user attempts to access a service or go to a site where the ISA Server computer denies access. The Internet server that is being accessed interprets the requests from the ISA Server computer as if the requests originated from the client application.

When you choose Internet Protocol (IP) fragment filtering, you enable the Web Proxy and Firewall services to filter packet fragments. By filtering packet fragments, all fragmented IP packets are dropped. A well-known “attack” involves sending fragmented packets and then reassembling them in such a way that may cause harm to the system.

ISA Server features an intrusion detection mechanism, which identifies the time when an attack is attempted against a network and performs a set of configured actions (or alerts) in case of an attack.

If Internet Information Services (IIS) is installed on the ISA Server computer, you must configure it to not use the ports that ISA Server uses for outgoing Web requests (by default, 8080) and for incoming Web requests (by default, 80). For example, you can change IIS to monitor port 81, and then configure the ISA Server computer to direct the incoming Web requests to port 81 on the local computer running IIS.

If there is a conflict between ports that ISA Server and IIS use, the setup program stops the IIS publishing service. You can then change IIS to monitor a different port and restart the IIS publishing service.

ISA Server policies

You can define an ISA Server policy that dictates inbound and outbound access. Site and content rules specify which sites and content can be accessed. Protocol rules indicate whether a particular protocol is accessible for inbound and outbound communication.

You can create site and content rules, protocol rules, Web publishing rules, and IP packet filters. These policies determine how the ISA Server clients communicate with the Internet and what communication is permitted.

Additional security settings for SQL Server

Whether you are using SQL Server 2000 or SQL Server 2005 with Microsoft Dynamics GP, it is important that you take measures to increase the security of your SQL Server installation. The following steps will help increase SQL Server security:

- Be sure that the latest operating system and SQL Server service packs and updates are installed. Check the Microsoft Security & Privacy Web site (<http://www.microsoft.com/security/default.asp>) for the latest details.
- For file system-level security, be sure that all SQL Server data and system files are installed on NTFS partitions. You should make the files accessible only to administrative or system-level users through NTFS permissions. This will safeguard against users accessing those files when the SQL Server service (MSSQLSERVER) is not running.
- Use a low-privilege domain account or the LocalSystem account for SQL Server service (MSSQLSERVER). This account should have minimal rights in the domain and should help contain - but not stop - an attack to the server in case of

compromise. In other words, this account should have only local user-level permissions in the domain. If SQL Server is using a domain administrator account to run the services, a compromise of the server will lead to a compromise of the entire domain. To change this setting, use SQL Server 2000 Enterprise Manager or SQL Server 2005 Management Studio. The access control lists (ACLs) on files, the registry, and user rights will be changed automatically.

- Most editions of SQL Server are installed with two default databases, Northwind and pubs. Both databases are sample databases that are used for testing, training, and for general examples. They should not be deployed within a production system. Knowing that these databases are present can encourage an attacker to attempt exploits involving default settings and default configuration. If Northwind and pubs are present on the production SQL Server computer, they should be removed. SQL Server 2005 Express Edition does not install these databases by default.
- By default, SQL Server 2000 system cannot be audited, so no conditions are audited. This makes intrusion detection difficult and aids attackers in covering their tracks. At a minimum, you should enable auditing of failed logins.

For the most up-to-date SQL Server security information, see <http://www.microsoft.com/sql/techinfo/administration/2000/security/default.asp>.

Chapter 3: Network security

Use the following information to learn more about keeping your network secure.

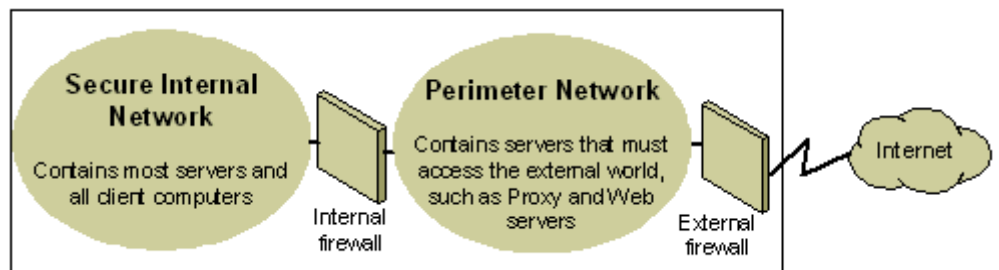
This information is divided into the following sections.

- [Strategies for network security](#)
- [Wireless networks](#)
- [Network security scenarios](#)

Strategies for network security

Because the design and deployment of an IP internetworking environment requires balancing private and public network concerns, the firewall has become a key ingredient in safeguarding network integrity. A firewall is not a single component. The National Computer Security Association (NCSA) defines a firewall as “a system or combination of systems that enforces a boundary between two or more networks.” Although different terms are used, that boundary is frequently known as a perimeter network. The perimeter network protects your intranet or enterprise local area network (LAN) from intrusion by controlling access from the Internet or other large networks.

The illustration below shows a perimeter network bounded by firewalls and placed between a private network and the Internet in order to secure the private network.



Organizations vary in their approach to using firewalls for providing security. IP packet filtering offers weak security, is cumbersome to manage, and is easily defeated. Application gateways are more secure than packet filters and easier to manage because they pertain only to a few specific applications, such as a particular e-mail system. Circuit gateways are most effective when the user of a network application is of greater concern than the data being passed by that application. The proxy server is a comprehensive security tool that includes an application gateway, safe access for anonymous users, and other services. Here is additional information about each of these different options:

IP Packet Filtering IP packet filtering was the earliest implementation of firewall technology. Packet headers are examined for source and destination addresses, Transmission Control Protocol (TCP), and User Datagram Protocol (UDP) port numbers, and other information. Packet filtering is a limited technology that works best in clear security environments where, for example, everything outside the perimeter network is not trusted and everything inside is. In recent years, various vendors have improved on the packet filtering method by adding intelligent decision-making features to the packet-filtering core, thus creating a new form of packet filtering called stateful protocol inspection. You can configure packet

filtering to either (1) accept specific types of packets and deny all others or (2) deny specific types of packets and accept all others.

Application Gateways Application gateways are used when the actual content of an application is of greatest concern. That they are application-specific is both their strength and their limitation, because they do not adapt easily to changes in technology.

Circuit Gateways Circuit gateways are tunnels built through a firewall connecting specific processes or systems on one side with specific processes or systems on the other. Circuit gateways are best employed in situations where the person using an application is potentially a greater risk than the information carried by the application. The circuit gateway differs from a packet filter in its ability to connect to an out-of-band application scheme that can add additional information.

Proxy Servers Proxy servers are comprehensive security tools, which include firewall and application gateway functionality, that manage Internet traffic to and from a LAN. Proxy servers also provide document caching and access control. A proxy server can improve performance by caching and directly supplying frequently requested data, such as a popular Web page. A proxy server can also filter and discard requests that the owner does not consider appropriate, such as requests for unauthorized access to proprietary files.

Be sure to take advantage of firewall security features that can help your organization. Position a perimeter network in the network topology at a point where all traffic from outside the corporate network must pass through the perimeter maintained by the external firewall. You can fine-tune access control for the firewall to meet your organization's needs and can configure firewalls to report all attempts at unauthorized access.

To minimize the number of ports that you need to open on the inner firewall, you can use an application layer firewall, such as ISA Server 2000.

For more information about TCP/IP, see "Designing a TCP/IP Network," located at http://www.microsoft.com/resources/documentation/WindowsServ/2003/all/deployguide/en-us/dnsbb_tcp_overview.asp.

Wireless networks

By default, wireless networks are typically configured in a manner that allows eavesdropping on the wireless signals. They can be vulnerable to a malicious outsider gaining access because of the default settings on some wireless hardware, the accessibility that wireless networks offer, and present encryption methods. There are configuration options and tools that can protect against eavesdropping, but keep in mind that they do nothing to protect the computers from hackers and viruses that enter through the Internet connection. Therefore, it is extremely important to include a firewall to protect the computers from unwanted intruders on the Internet.

For more information about protecting a wireless network, see "How to Make your 802.11b Wireless Home Network More Secure," located at:

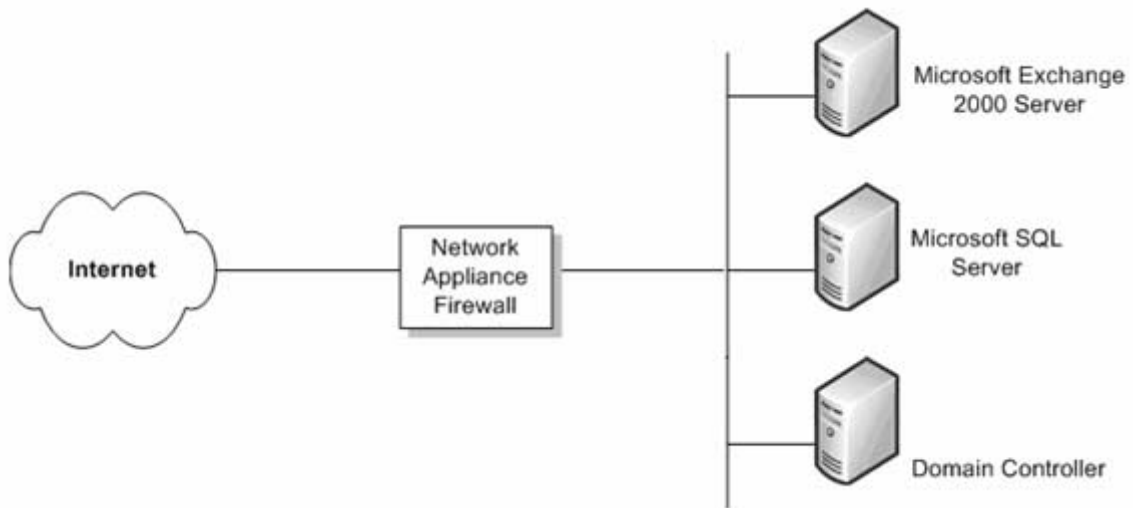
<http://support.microsoft.com/default.aspx?scid=kb;en-us;309369>.

Network security scenarios

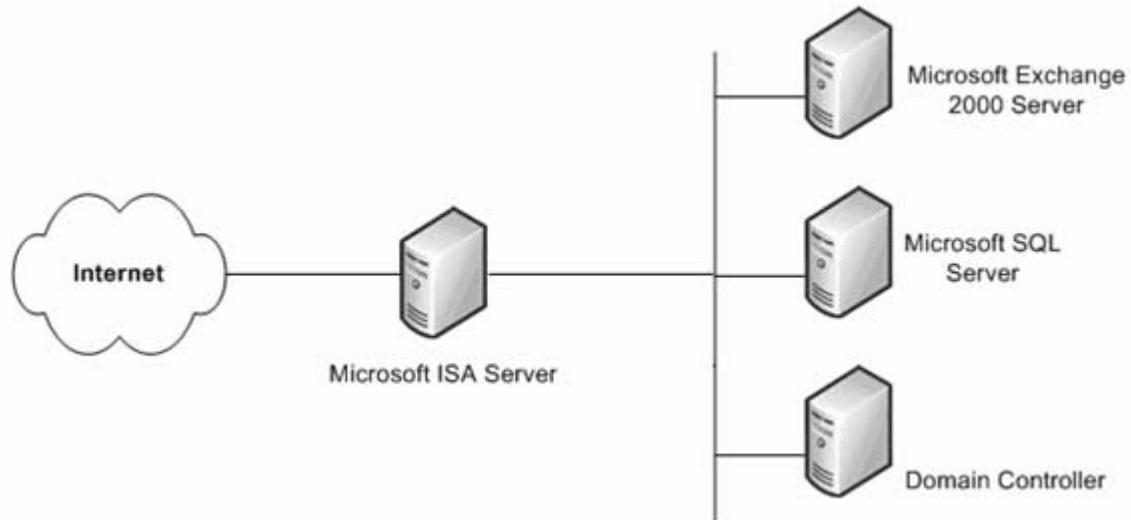
The level of network security that your organization requires will depend on several factors. It usually comes down to a compromise between budget and the need to keep the corporate data safe. It is possible for a small company to provide a very complex security structure that will provide the highest level of network security possible, but a small company may not be able to afford that level of security. In this section, we will review four scenarios and make recommendations in each that will provide varying levels of security at a relative cost.

No Firewall If your organization has a connection to the Internet but no firewall, some measure of network security needs to be implemented. There are simple network firewall appliances, as described in the next section, that provide enough security to deter most would-be hackers.

One Simple Firewall The minimum level of security recommended is a single firewall between the Internet and your data. This firewall may not provide any level of advanced security and should not be considered very secure. But it is better than nothing.



Hopefully, your budget will allow for a more secure solution that will protect your corporate data. One such solution is ISA Server. The increased cost of this additional server provides a great deal more security than a typical consumer firewall, since it usually provides only network address translation (NAT) and packet filtering.

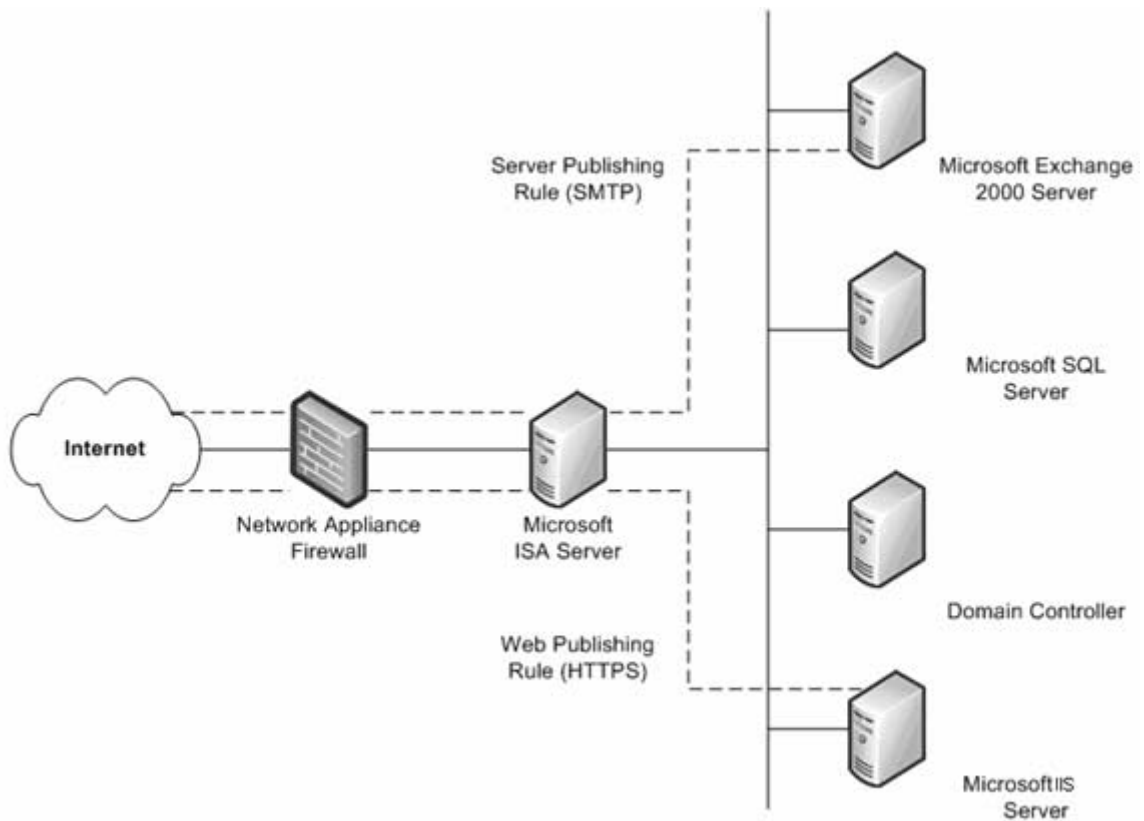


This single firewall solution is more secure than an entry-level firewall appliance and provides Windows-specific security services.

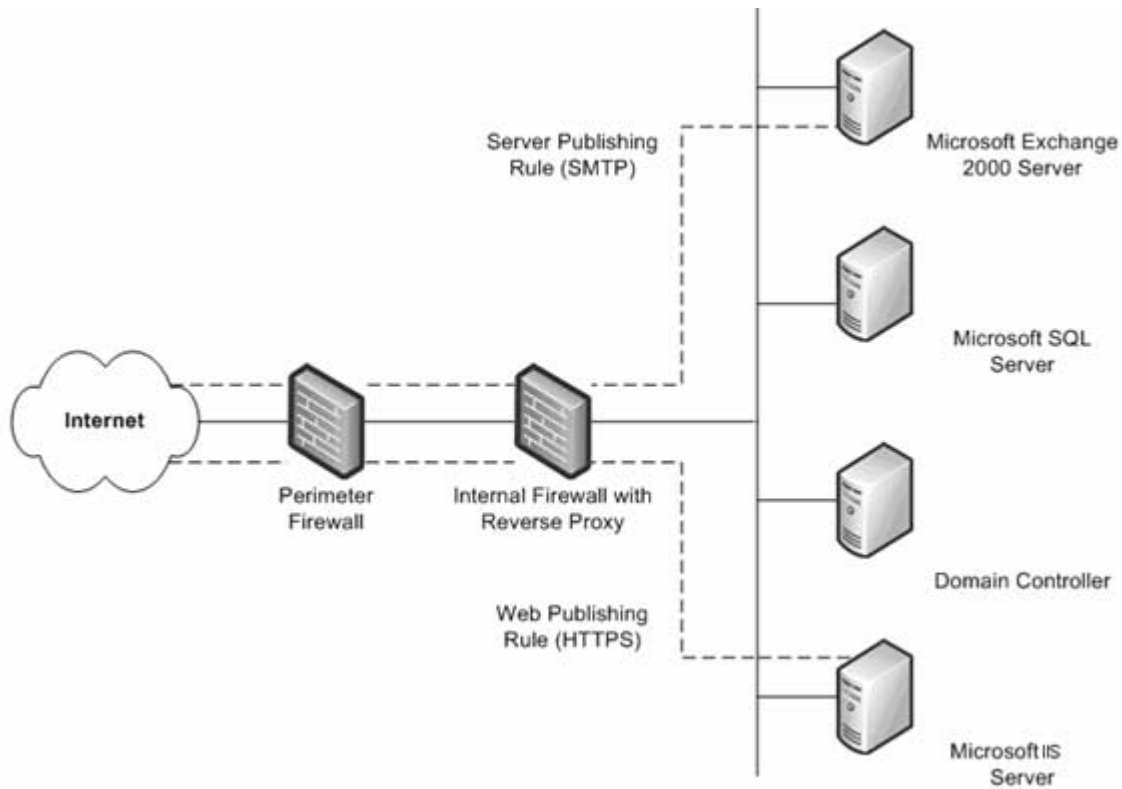
One Existing Firewall If you have an existing firewall that separates your intranet from the Internet, you may want to consider an additional firewall that provides multiple ways to configure internal resources to the Internet.

One such method is Web publishing. This is when an ISA Server is deployed in front of an organization's Web server that is providing access to Internet users. With incoming Web requests, ISA Server can impersonate a Web server to the outside world, fulfilling client requests for Web content from its cache. ISA Server forwards requests to the Web server only when the requests cannot be served from its cache.

Another method is server publishing. ISA Server allows publishing internal servers to the Internet without compromising the security of the internal network. You can configure Web publishing and server publishing rules that determine which requests should be sent to a server on the local network, providing an increased layer of security for the internal servers.



Two Existing Firewalls The fourth scenario involves the two firewalls implemented with an established perimeter network (DMZ). One or more of these servers provides reverse proxy services so that Internet clients are not accessing servers on the intranet directly. Instead, one of the firewalls, ideally the internal firewall, is intercepting network requests for internal servers, inspecting those packets, and then forwarding them on behalf of the Internet host.



This scenario is similar to the preceding scenario after the second firewall is added. The only difference is that the internal firewall that supports reverse proxy is not an ISA Server. In this scenario, you should work closely with the managers of each firewall to define server publishing rules that adhere to the security policy.

Chapter 4: Virus protection

Use the following information to learn about the different types of computer viruses and what you can do to help keep the computers within your company from being infected by a computer virus.

This information is divided into the following sections.

- [Overview of viruses](#)
- [Types of viruses](#)

Overview of viruses

A computer virus is an executable file that is designed to replicate itself, erase or corrupt data files and programs, and avoid detection. In fact, viruses are often rewritten and adjusted so that they cannot be detected. Viruses are often sent as e-mail attachments. Antivirus programs must be updated continuously to look for new and modified viruses. Viruses are the number one method of computer vandalism.

Antivirus software is specifically designed for the detection and prevention of virus programs. Because new virus programs are created all the time, many makers of antivirus products offer periodic updates of their software to customers. Microsoft strongly recommends implementing antivirus software in your organization's environment.

Virus software is usually installed at each of these three places: user workstations, servers, and the network where e-mail comes into (and in some cases, leaves) the organization.

For more information about viruses and computer security in general, refer to the following Microsoft Security Web sites:

- Microsoft Security & Privacy (<http://www.microsoft.com/security/default.asp>).
- Security documentation on Microsoft TechNet (<http://www.microsoft.com/technet/security/Default.mspx>).

Types of viruses

There are four main types of viruses that infect computer systems: boot-sector viruses, file-infecting viruses, Trojan horse programs, and macro viruses.

Boot-Sector viruses When a computer starts, it scans the boot sector of the hard disk before loading the operating system or any other startup files. A boot-sector virus is designed to replace the information in the hard disk's boot sectors with its own code. When a computer is infected with a boot-sector virus, the virus' code is read into memory before anything else. After the virus is in memory, it can replicate itself onto any other disks that are in use in the infected computer.

File-Infecting viruses The most common type of virus, a file-infecting virus, attaches itself to an executable program file by adding its own code to the executable file. The virus code is usually added in such a way that it escapes detection. When the infected file is run, the virus can attach itself to other executable

files. Files infected by this type of virus usually have a .com, .exe, or .sys file name extension.

Some file-infesting viruses are designed for specific programs. Program types that are often targeted are overlay (.ovl) files and dynamic-link library (.dll) files. Although these files are not run, executable files call them. The virus is transmitted when the call is made.

Damage to data occurs when the virus is triggered. A virus can be triggered when an infected file is run or when a particular environment setting is met (such as a specific system date).

Trojan horse programs A Trojan horse program is not really a virus. The key distinction between a virus and a Trojan horse program is that a Trojan horse program does not replicate itself; it only destroys information on the hard disk. A Trojan horse program disguises itself as a legitimate program, such as a game or utility. When it's run, though, it can destroy or scramble data.

Macro viruses A macro virus is a type of computer virus that's stored in a macro within a file, template, or add-in. The spread of a macro virus can be prevented. Here are some tips to avoid infection that you should share with your organization.

- Install a virus protection solution that scans incoming messages from the Internet for viruses before the messages pass the router. This will ensure that e-mails are scanned for known viruses.
- Know the source of the documents that are received. Documents should not be opened unless they are from someone that the user feels is trustworthy.
- Talk to the person who created the document. If the users are at all unsure whether the document is safe, they should contact the person who created the document.
- Use the Microsoft Office macro virus protection. In Office, the applications alert the user if a document contains macros. This feature allows the user to either enable or disable the macros as the document is opened.
- Use virus-scanning software to detect and remove macro viruses. Virus-scanning software can detect and often remove macro viruses from documents. Microsoft recommends the use of antivirus software that is certified by the International Computer Security Association (ICSA).
- Set the macro security level of Microsoft Office files to High or Medium and use digital signatures. A digital signature is an electronic, encryption-based, secure stamp of authentication on a macro or document. This signature confirms that the macro or document originated from the signer and has not been altered. For more information about Microsoft Office security features, visit the Microsoft Office Online Web site (<http://office.microsoft.com/en-us/default.aspx>).

Chapter 5: Microsoft Dynamics GP security

Microsoft Dynamics GP provides several types of security. The following information is an overview of the security features in Microsoft Dynamics GP.

For step-by-step instructions on setting up security within the Microsoft Dynamics GP application, see Part 2: User Setup of the Microsoft Dynamics GP System Setup manual.

The Microsoft Dynamics GP System Setup manual can be accessed by choosing the Printable Manuals option from the Microsoft Dynamics GP Help menu, or by downloading it from the CustomerSource Web Site.

Microsoft Dynamics GP uses Microsoft SQL Server fixed and database roles for more effective security management.

This information is divided into the following sections.

- [*Areas that are affected by security settings*](#)
- [*Granting security access*](#)
- [*How passwords are used in Microsoft Dynamics GP*](#)
- [*Items that you can set security for*](#)
- [*Application security*](#)
- [*Microsoft Dynamics GP Utilities security*](#)
- [*Office Smart Tags*](#)
- [*Security troubleshooting*](#)

Areas that are affected by security settings

The following areas of Microsoft Dynamics GP are affected by security settings.

System System security controls access to systemwide setup information, such as setting up new user records, assigning user security or printing reports that contain that information. System level security is controlled through the use of a password; only a few people should know the password.

Company Company security controls access to companies on a per-user basis. When you set up a new user record, that person doesn't have access to any companies. You'll need to grant access, using the User Access Setup window, before the user can log in to Microsoft Dynamics GP.

Security tasks Security tasks are assigned to roles and grant access to windows, reports, files, and other resources within Microsoft Dynamics GP that users need to access to complete a specific task. Some default security tasks have been created for you. For example, the DEFAULTUSER task allows users to access things that most users will need to access in Microsoft Dynamics GP.

Security roles Security roles contain the security tasks that a user needs to access to do their job. Some default security roles have been created for you. For example, the ACCOUNTING MANAGER* role contains security tasks that allow a user who is assigned to this role to view General Ledger account information, enter journal entries, enter bank transactions, and perform other tasks that an accounting manager might need to perform.

Individual users Individual security is role-based in Microsoft Dynamics GP. Each user must be assigned to a security role before they can access any forms, reports, or other data within Microsoft Dynamics GP. To begin assigning user security, identify the daily tasks that a user completes within Microsoft Dynamics GP. Then either select from the default security roles or create new security roles that only grant access to the tasks that the user needs.

For example, user ABC is an accounting manager for Fabrikam, Inc., and needs access to set up General Ledger, taxes, bank accounts, and credit cards as well as perform many other accounting tasks. Review the default security roles in Microsoft Dynamics GP to find one that grants access to the appropriate accounting functionality for user ABC. For our example, the ACCOUNTING MANAGER* security role is appropriate for user ABC. Use the User Security Setup Window to assign the ACCOUNTING MANAGER* security role to user ABC in the Fabrikam, Inc. company.

Module-specific tasks Most Microsoft Dynamics GP modules have specific tasks that can be set up to require a password; each task can have a different password. If a password is required, all users attempting to complete that task must enter the password. See the setup documentation for each accounting module for information about these passwords.

Account Account level security enhances security and account views. Users can enter, edit, and view information from a reduced account set based on the access granted for accounts.

Field level security Field level security restricts access to any field, window, or form in Microsoft Dynamics GP. It allows you to apply a password, or to make a window or form unavailable. It also allows you to hide, lock, or apply passwords to fields.

Granting security access

A system administrator can grant access to parts of the Microsoft Dynamics GP system in all companies for individual users.

If you use Report Writer or Modifier to modify forms or reports, an administrator must add those modified forms or reports to an Alternate/Modified Forms and Reports ID and then assign that Alternate/Modified Forms and Reports ID to each user that should be able to view those modified forms or reports.

Individual users Individual security is role-based in Microsoft Dynamics GP. Each user must be assigned to a security role before they can access any forms, reports, or other data within Microsoft Dynamics GP. To begin assigning user security, identify the daily tasks that a user completes within Microsoft Dynamics GP. Then either select from the default security roles or create new security roles that only grant access to the tasks that the user needs.

For example, user ABC is an accounting manager for Fabrikam, Inc., and needs access to set up General Ledger, taxes, bank accounts, and credit cards as well as perform many other accounting tasks. Review the default security roles in Microsoft Dynamics GP to find one that grants access to the appropriate accounting functionality for user ABC. For our example, the ACCOUNTING MANAGER* security role is appropriate for user ABC. Use the User Security Setup Window to assign the ACCOUNTING MANAGER* security role to user ABC in the Fabrikam, Inc. company.

Module-specific tasks Most Microsoft Dynamics GP modules have specific tasks that can be set up to require a password; each task can have a different password. If a password is required, all users attempting to complete that task must enter the password. See the setup documentation for each accounting module for information about these passwords.

How passwords are used in Microsoft Dynamics GP

Microsoft Dynamics GP uses passwords to control access to a company and selected parts of the accounting system. Passwords can contain uppercase and lowercase letters, numeric characters, punctuation, and embedded spaces. There are three types of passwords.

User passwords User passwords control whether a particular user has access to Microsoft Dynamics GP. User passwords are initially set up in the User Setup window by an administrator or entered during the initial Microsoft Dynamics GP installation process. Users can change their own passwords using the User Password Setup window.

System passwords The system password controls access to systemwide setup information, such as setting up new user records, assigning user security, or printing reports that contain that information. The system password is set up using the System Password Setup window. Only a few people should know the system password.

Task passwords Most Microsoft Dynamics GP modules have specific tasks that can be set up to require a password; each task can have a different password. If a password is required, all users attempting to complete that task must enter the password. See the setup documentation for each accounting module for information about these passwords.

Items that you can set security for

You can set security for the following items in Microsoft Dynamics GP and integrating products.

Item	Description
Windows	Windows in the selected product.
Reports	Reports in the selected product.
Modified windows	Windows customized using Modifier.
Modified reports	Primary copies of reports created using Report Writer. Note: The Report Writer name of the report appears in the list. The Report Writer name is the one that appears in the title bar of the Screen Output window when you print a report.
Files	Tables in the selected product.
Alternate Microsoft Dynamics GP reports*	Microsoft Dynamics GP reports that have been incorporated into integrating products you've installed.
Alternate Microsoft Dynamics GP windows*	Microsoft Dynamics GP windows that have been incorporated into integrating products you've installed.
Modified alternate Microsoft Dynamics GP reports*	Alternate reports that have been modified using Report Writer.

Item	Description
Modified alternate Microsoft Dynamics GP windows*	Alternate windows that have been modified using Modifier.
Custom reports	Secondary copies and new reports created in Report Writer.
Advanced financial reports	Modified advanced financial reports
Series posting permissions	Specific posting tasks for each Microsoft Dynamics GP product you've purchased.
Customization Tools	Tools you use to customize the accounting system, such as Report Writer or the Modifier. New users don't have access to these by default. They need to be granted access.
Microsoft Dynamics GP import **	The Microsoft Dynamics GP Integration Manager. This also sets up security for the Import Utility with Microsoft Dynamics GP. New users don't have access to these by default. They need to be granted access.
Document access	Quotes, orders, invoices, returns, and back orders for Sales Order Processing. Standard and drop-ship purchase orders for Purchase Order Processing.
Letters	Letters to customers, employees, and vendors that are available using the Letter Writing Assistant.
Navigation Lists	Default primary lists. Note: If you restrict access to a primary list, access to any list view that is based on that primary list is also restricted.
*These items appear only if you're using an integrating product and have selected it in the Product list.	
**These types appear only if the corresponding item is installed and registered.	

Application security

Use the following information to better understand how Microsoft Dynamics GP handles application security.

- Tasks that must be completed by an administrator include making backups, creating companies, and creating new user IDs.
- The database owner is set to DYNSA for every Microsoft Dynamics GP database. It is essential that DYNSA continue to be the owner of every Microsoft Dynamics GP database. If a different owner is assigned, complications can arise when deleting user accounts and granting access to companies.
- The DYNSA and sa users automatically are assigned to the POWERUSER security role. Any user who is assigned to the POWERUSER security role will have access to everything in Microsoft Dynamics GP, with the exception of private lists.
- All users must have valid passwords to log in to the application. If a blank password is detected, the user is forced to change the password before logging into the application. We also recommend that all inactive user accounts be deleted or assigned a valid password and removed from all company access.
- Lesson Users only have access to the sample company.
- Each new security role that is created automatically contains the DEFAULTUSER security task. The DEFAULTUSER security task provides access to things that most users will typically need access to in Microsoft Dynamics GP.

Microsoft Dynamics GP Utilities security

Any member of the SysAdmin fixed server role can upgrade from a previous release or install Microsoft Dynamics GP.

Security for new installations

Microsoft Dynamics GP Utilities checks to see whether the DYNOSA login exists. If it doesn't exist, the login is created and the DYNOSA user must enter a password to continue. DYNOSA is set as the database owner for ALL Microsoft Dynamics GP databases.

- When the DYNOSA login is created, the login is assigned to the SecurityAdmin and dbCreator Fixed Server Roles.
- Any user with the correct SQL permissions can install Microsoft Dynamics GP.
- When installing the sample company, passwords must be provided when creating the LESSON USER accounts.
- When the DYNOSA, LESSONUSER1, and LESSONUSER2 logins are created, they do not have access to the SY02400 table (System Password Master Table). This means that these logins also will not be able to access this table using Report Writer.

Upgrading from a previous release

- When the system administrator ("sa") logs into Microsoft Dynamics GP Utilities, the application checks to see if the password for DYNOSA is either <blank> or ACCESS. If either of these is true, the user must enter a new DYNOSA password before continuing with the upgrade.
- Access to the SY02400 table (System Password Master Table) in Report Writer is removed for all users.
- When the DYNOSA login is created, the login automatically is assigned to the SecurityAdmin and dbCreator Fixed Server Roles.

Office Smart Tags

Microsoft Office Smart Tag Manager is used to set up and activate Office Smart Tags within the Microsoft Dynamics GP application. Microsoft Office Smart Tags are not tied to Microsoft Dynamics GP security.



Office Smart Tag Manager is a separate download available in the Downloads & Updates area of the CustomerSource Web site. For detailed instructions on installing Office Smart Tags, see the Microsoft Dynamics GP Office Smart Tags manual.

Office Smart Tags are based on network groups, so that users with common business needs (such as customer service representatives, business analysts, or salespersons) can access the same set of smart tags and the same company databases. The network groups should be planned and set up prior to installing Office Smart Tag Manager. After Office Smart Tag Manager has been installed and the network groups have been created with users added to the appropriate groups, access to the applicable entities, actions, and companies needs to be defined for each network group within the Office Smart Tag Manager tool.

Entities and actions can be made available or unavailable individually or all at once. When an entity is unavailable, all its actions are unavailable, as well.

You must grant a group access to at least one entity, action, and company before Office Smart Tag Manager will be available for the members of the group.

Office Smart Tags are identified by the type of data or entity that they recognize from Microsoft Dynamics applications. Each entity can perform several actions, and the actions provide direct links to the Microsoft Dynamics applications from Office.

For each Office Smart Tag Manager group, you must enable access to the smart tag entities that are appropriate for the group's business needs. For example, it may be appropriate for customer service representatives to have access to the Customer, Item, and Account smart tags, or for business analysts to have access to all of the Microsoft smart tags. You must also enable access to actions for each of the enabled smart tag entities based on what is appropriate for the group. For example, it may be appropriate to enable only viewing actions for customer service representatives whose only responsibility is responding to customer order inquiries rather than giving them the ability to open application windows.

For each Office Smart Tag Manager group, you must also enable access to specific companies within a Microsoft Dynamics application. This access should be based on the common business needs of the users.



When a user is a member of more than one Office Smart Tag Manager group, that user only has access to the smart tag entities, actions, and companies that are enabled in all groups. If a single entity, action, or company is unavailable in one of the groups, that entity, action, or company will not be available to the user. Also, you cannot create a network group with the name "SmartTags" as a group name because this phrase is a reserved name within the application.

Security troubleshooting

Many of the processes in Microsoft Dynamics GP, such as posting or printing, require that the user performing the process be able to access multiple windows, reports, and tables. If a user is denied access to an item that's part of a process, the user won't be able to complete that process. A message may appear stating that the user doesn't have privileges to open the resource. However, a message might not always be displayed indicating the problem. Denying access to tables only denies access to reports that access the table.

If a user encounters problems completing a process, verify that the roles that are assigned to the user in the User Security Setup window contain the tasks that the user needs to complete the process. The problem may be caused by the user not having access to all the items used in the process.

Chapter 6: The Microsoft Dynamics GP database security model

Use this information to learn about the Microsoft Dynamics GP database security model.

This information is divided into the following sections.

- [*Password security*](#)
- [*DYNGRP database role*](#)
- [*SysAdmin fixed server role*](#)
- [*SQL Server fixed database roles beginning with “rpt ”*](#)

Password security

User accounts must be created within the Microsoft Dynamics GP application to ensure that security is applied to all Microsoft Dynamics GP windows and reports. Microsoft Dynamics GP encrypts the password during the user creation process before it is passed to Microsoft SQL Server. For example, if a user account is created with a password of '1234,' before the user account is created in the Microsoft SQL Server, that password passes through the Microsoft Dynamics GP encryption process and is changed to something like 'ABCD.' When this happens, only the Microsoft Dynamics GP application and other applications that use the Microsoft Dynamics GP encryption process have the ability to translate the user's password before sending it to Microsoft SQL Server.

If a user tries to access the Microsoft SQL Server from outside the Microsoft Dynamics GP application, the attempt to log in will be denied because the passwords will not match. For improved security, Microsoft Dynamics GP does not allow a user to change their password to blank or unencrypted.

DYNGRP database role

A thorough understanding of the DYNGRP database role is vital to securing data. The DYNGRP database role is used to gain access to the objects, such as tables, stored procedures, and views that exist within the database. This simplifies the process of assigning specific permissions to the database objects. Granting SELECT, UPDATE, INSERT, DELETE, and EXECUTE permissions to the DYNGRP database for all objects that exist within the database eliminates the need to explicitly grant object access to individual users by SQL DBAs and the Microsoft Dynamics GP application. Instead, the Microsoft Dynamics GP individual users are members of the DYNGRP database, and those users inherit the same permissions. When an administrator grants a user access to a company within Microsoft Dynamics GP, the user also becomes a member of the DYNGRP for that corresponding database.

While this database role is used in conjunction with the Microsoft Dynamics GP application, it is important to understand that only Microsoft Dynamics GP users should be members of this role. If user accounts that do not have encrypted passwords are placed inside this database role, users may have access via other applications. If other applications need access to Microsoft Dynamics GP data, the administrator should create new database roles with specific permissions established for only the objects that individual users need access to. Following this process reduces the risk that unauthorized users will gain access to your data.

SysAdmin fixed server role

There are two types of SQL Server roles: fixed server and database. Fixed server roles are used to manage SQL Server and perform functions that affect SQL Server availability and processes, such as creating databases and adding logins. Database roles are used to manage the specific database that the database roles are assigned to. Database management functions include granting user access, granting permissions to database objects, and backing up the database itself.

SQL Server fixed database roles beginning with "rpt_"

A Default SQL Server Fixed Database role that corresponds to each of the default SQL Server Reporting Services reports, data connections, and Microsoft Excel[®] reports is created during the installation of Microsoft Dynamics GP. Each role begins with "rpt_" and contains SELECT access to the Microsoft Dynamics GP data for the data connection or report that the role corresponds to.

Users should be added as members to the SQL Server roles that correspond to the reports or data connections that they need access to. See your System Setup Guide (Help >> Contents >> select Setting up the System) for more information.

Chapter 7: Core application security tasks

The following information provides common core application security tasks and a number of options to complete the tasks. The options vary in their level of security. The highest numbered option is the most secure option for each task.

This information is divided into the following sections.

- [*Creating user records*](#)
- [*Deleting user records*](#)
- [*Granting user access*](#)
- [*Backing up databases*](#)
- [*Restoring databases*](#)
- [*Business Alerts*](#)
- [*SQL maintenance*](#)
- [*Deleting companies*](#)
- [*Deleting stranded user accounts*](#)

Creating user records

Creating and managing user accounts within Microsoft Dynamics GP are among the most critical tasks because they involve granting access to data. The following options are available to choose from. The most secure choice is option 5.

Options

1. Log in to Microsoft Dynamics GP as the system administrator (“sa”) and create the users as required (no change from previous releases). Microsoft Dynamics GP administrator accounts can be any user account within the application.
2. Assign the specific Microsoft Dynamics GP administrator SQL login accounts to the SysAdmin fixed server role. The current user must be a member of the DYNGRP in the DYNAMICS database to execute stored procedures. With this option, the Microsoft Dynamics GP administrator can be any user account within the Microsoft Dynamics GP application.
3. Assign the DYNAMICS database owner login (DYNSA) to the SecurityAdmin Fixed Server Role, and log into the client using the DYNSA user.
4. Assign the specific Microsoft Dynamics GP Administrator(s) SQL Login account to the SecurityAdmin Fixed Server Role and also within the Db_Owner Database Role that exists within the DYNAMICS database. With this option, the Microsoft Dynamics GP administrator can be any user account within the Microsoft Dynamics GP application; however, DYNSA must be the database owner of ALL Microsoft Dynamics GP databases.
5. Assign the specific Microsoft Dynamics GP administrator(s) SQL login account to the SecurityAdmin fixed server role and within the Db_AccessAdmin and Db_SecurityAdmin database roles that exists to the DYNAMICS database. With this option, the Microsoft Dynamics GP administrator can be any user account within the Microsoft Dynamics GP application; however, DYNSA must be the database owner of ALL Microsoft Dynamics GP databases.

Deleting user records

Deleting user records is as important to security as creating user accounts. Because of this, the same options that are available when creating user records are available when deleting them. The following options are available. The most secure option is option 5.

Options

1. Log in to the application as the system administrator (“sa”) and delete the user records as required (no change from previous releases).
2. Assign the specific Microsoft Dynamics GP Administrator(s) SQL Login account to the SysAdmin Fixed Server Role. With this option, the Microsoft Dynamics GP Administrator can be any user account within the Microsoft Dynamics GP application.
3. Assign the database owner login (DYNSA) to the SecurityAdmin Fixed Server Role and log into the client using DYNSA. With this option, DYNAS must be the database owner of ALL Microsoft Dynamics GP databases.
4. Assign the specific Microsoft Dynamics GP Administrator(s) SQL Login account to the SecurityAdmin Fixed Server Role and also to the Db_Owner Database Role that exists within all Microsoft Dynamics GP databases. The Microsoft Dynamics GP Administrator can be any user account within the Microsoft Dynamics GP application.
5. Assign the specific Microsoft Dynamics GP Administrator(s) SQL Login account to the SecurityAdmin Fixed Server Role and also within the Db_AccessAdmin Database Role that exists within all Microsoft Dynamics GP databases. With this option, the Microsoft Dynamics GP Administrator can be any user account within the Microsoft Dynamics GP application; however, DYNSA must be the database owner of ALL Microsoft Dynamics GP databases.

Granting user access

The steps required to grant access to a company database remain the same with Microsoft Dynamics GP Release 9.0 as in previous releases. However, the user must have sufficient permissions to grant access to a company database. The following options are available. The most secure choice is option 5.

Options

1. Log in to the application as the system administrator (“sa”) and grant access as required (no change from previous releases).
2. Assign the specific Microsoft Dynamics GP Administrator(s) SQL Login account to the SysAdmin Fixed Server Role. With this option, the Microsoft Dynamics GP administrator can be any user account within the Microsoft Dynamics GP application.
3. Log in as the database owner (DYNSA). With this option, DYNSA must be the database owner of ALL Microsoft Dynamics GP databases.

4. Assign the specific Microsoft Dynamics GP Administrator(s) SQL Login account to the Db_Owner Database Role that exists within all Microsoft Dynamics GP databases. With this option, the Microsoft Dynamics GP Administrator can be any user account within the Microsoft Dynamics GP application; however, DYNSA must be the database owner of ALL Microsoft Dynamics GP databases.
5. Assign the specific Microsoft Dynamics GP Administrator(s) SQL Login account to the Db_AccessAdmin and Db_SecurityAdmin Database Roles that exist within all Microsoft Dynamics GP databases. With this option, the Microsoft Dynamics GP administrator can be any user account within the Microsoft Dynamics GP application; however, DYNSA must be the database owner of ALL Microsoft Dynamics GP databases.

Backing up databases

The following options are available to choose from. The most secure choice is option 4.

Options

1. Log in to the application as the system administrator (“sa”) and perform the backup as required (no change from previous releases).
2. Assign the specific Microsoft Dynamics GP Administrator(s) SQL Login account to the SysAdmin Fixed Server Role.
3. Log in to the application using the database owner login (DYNSA).
4. Assign the specific Microsoft Dynamics GP user(s) SQL Login account to the Db_BackupOperator Database Role. Since this option doesn’t require the Microsoft Dynamics GP Administrator(s) to login as the SQL Server system administrator, this is the most secure option.

Restoring databases

The ability to restore databases is also an option within the Microsoft Dynamics GP application. Because there is a risk that this feature could be misused to alter, remove, or damage data, access to the Restore Company window is restricted to the system administrator (“sa”) login.

Business Alerts

Creating and running business alerts requires a handful of “touch points” or access within Microsoft SQL Server. Business alerts create stored procedures, Microsoft SQL Server jobs, and can send e-mail messages to users. Because of this, the correct permissions not only need to be granted to the company databases, but also to objects that exist inside the master and msdb databases. Object ownership is also an issue when creating these objects. This is particularly true for the Microsoft SQL Server jobs. Because of this, we’ve limited the option for creating business alerts to two. The most secure choice is option 2.

Options

1. Log in to the application as the system administrator (“sa”) and create the business alert as required (no change from previous releases).
2. Assign the specific Microsoft Dynamics GP Administrator(s) SQL Login account to the SysAdmin Fixed Server Role. Since this option doesn’t require the Microsoft Dynamics GP Administrator(s) to log in as the SQL Server system administrator, this is the most secure option.

SQL maintenance

The SQL Maintenance window provides the ability to drop and create tables and stored procedures from within the Microsoft Dynamics GP application. The system administrator (“sa”) and the database owner (DYNSA) have access to this window and access can be assigned to other logins as well. There are three ways to gain access to this window. The most secure choice is option 3.

Options

1. Log in to the application as the system administrator (“sa”) to access this window (no change from previous releases).
2. Assign the specific Microsoft Dynamics GP Administrator(s) SQL Login account to the SysAdmin Fixed Server Role and access this window using that account.
3. Log in as the database owner (DYNSA) to access this window. Since this option doesn’t require the Microsoft Dynamics GP Administrator(s) to log in as the SQL Server system administrator, this is the most secure option.

Deleting companies

The Delete Company window is used to delete Microsoft Dynamics GP companies. The following options are available. Option 3 is the most secure.

Options

1. Log in to the application as system administrator (“sa”) and process as required (no change from previous releases).
2. Assign the specific Microsoft Dynamics GP Administrator(s) SQL Login account to the SysAdmin Fixed Server Role.
3. Log in as the database owner (DYNSA). Since this option doesn’t require the Microsoft Dynamics GP Administrator(s) to log in as the SQL Server system administrator, this is the most secure option.

Deleting stranded user accounts

Users can remove their own stranded logins without assistance from an administrator. If necessary, this option can be removed through a Microsoft Dexterity[®] or Visual Basic for Applications modification.

Chapter 8: Frequently asked questions

The following information contains frequently asked questions regarding Microsoft Dynamics GP.

This information is divided into the following sections.

- [User accounts](#)
- [Microsoft Dynamics GP windows](#)
- [Security in Microsoft Dynamics GP](#)

User accounts

The following information contains answers to questions about user accounts.

Why does one user account need access to all Microsoft Dynamics GP databases to delete another user account?

When a user account is being deleted, Microsoft Dynamics GP removes the user account from all databases it is a member of and deletes the SQL login. The current user will need to have access to each of the databases, as well as the correct permissions to delete the user account from SQL Server. If the current user doesn't have access to the database to remove a user account, a message is displayed alerting them of this.

Does the user account have to be in the same database role for all databases?

Technically, the user doesn't have to belong to the same database role for all databases, but it is highly recommended. It is possible to have a user belong to the DB_OWNER role in one database and the DB_ACCESSADMIN and DB_SECURITYADMIN in another database, and the ability to grant users access to company databases will still work as designed. However, all Microsoft Dynamics GP users should belong to the DYNGRP database role for proper functioning of the application.

Microsoft Dynamics GP windows

The following information contains answers to questions about windows within Microsoft Dynamics GP.

When I open the User Access window, why aren't the check boxes available?

When the requirements for using the User Access window are not met, the check boxes are unavailable. Within the User Access window, you have the ability to grant and deny access to companies. This action of granting and denying access is nothing more than adding and removing user accounts to the database and making the user a member of the DYNGRP. This action making check boxes available is determined by the following two factors:

- What database permissions the current user has when the window is opened.
- The user performing the action has the correct database permissions that are described in the User Access section of this document. We don't have the ability

to individually make each check box unavailable based on the permissions that are set at the database window.

Why is the Save button unavailable in the User Setup window?

The Save button is unavailable when the current user doesn't have the correct permissions to create a user account. If the current user doesn't belong to the SysAdmin Fixed Server role, then a combination of SQL Server roles must be used to create the login. The current user must be a member of the SecurityAdmin Fixed Server role and at least a member of the Db_Owner role or member of Db_AccessAdmin and Db_SecurityAdmin roles for the DYNAMICS database.

Why is the Delete button unavailable in the User Setup window?

The Delete button is unavailable when the current user doesn't have the correct permissions to delete a user account. If the current user doesn't belong to the SysAdmin Fixed Server role, then a combination of SQL Server roles must be used to create the login. The current user must be a member of the SecurityAdmin Fixed Server role and at least a member of the Db_Owner role or member of Db_AccessAdmin for all databases that exist in the Company Master table (SY01500). If there are records in the Company Master table that do not have a corresponding database, those records must be removed in order for the Delete button to be available.

Why is the Password field unavailable in the User Setup window?

The Password field is unavailable if the system administrator ("sa") user ID is entered in the User Setup window. The "sa" user password cannot be changed within the Microsoft Dynamics GP application because it would be encrypted and rendered useless with any other Microsoft SQL Server tool.

Why are some of password fields (Change Password Next Login, Enforce Password Policy, and Enforce Password Expiration) unavailable in the User Setup window, and how can I begin using these fields.

These features are only supported when Microsoft Dynamics GP is used in conjunction with Microsoft SQL Server 2005 and Windows Server 2003. They are not supported for use with Microsoft SQL Server 2000.

Security in Microsoft Dynamics GP

The following information contains answers to questions about security in Microsoft Dynamics GP.

Will the Microsoft Dynamics GP application recognize any SQL Server role?

Microsoft Dynamics GP recognizes and uses the following Microsoft SQL Server roles. No other roles are checked to permit or deny access to functionality within the Microsoft Dynamics GP product. It is required that each Microsoft Dynamics GP user be a member of the DYNGRP database role for each Microsoft Dynamics GP database.

- SysAdmin Fixed Server—Performs any activity in SQL Server. The permissions of this role span all of the other fixed server roles.

- SecurityAdmin Fixed Server–Manages server logins.
- Db_Owner–Performs the activities of all database roles, as well as other maintenance and configuration activities in the database. The permissions of this role span all of the other fixed database roles.
- Db_AccessAdmin–Adds or removes Windows NT[®] 4.0 or Windows 2000 groups and users, and SQL Server users in the database.
- Db_SecurityAdmin–Manages roles and members of SQL Server 2000 database roles, and manages statement and object permissions in the database.
- Db_BackupOperator–Has permission to back up the database.

Do integrating products support all of the security features in Microsoft Dynamics GP?

Some security features are not “rolled” into all of the additional products right away, but will most likely be added in a future release. This means that an administrator might need to use the system administrator (“sa”) login to initialize or convert any tables that require a conversion. In order for additional product dictionaries to utilize the security features, a new function, called syUserInRole, has been created, which can determine what database roles the user is a member of.

I set up security by limiting access to certain palettes in a prior release of Microsoft Dynamics GP. Since Microsoft Dynamics GP no longer uses palettes, what should I do now?

Because access needs to be granted or denied to windows, reports and tables, limiting access to palettes (in versions prior to release 8.0) only prevented users from accessing the windows available through that method of navigation. These users could still potentially have had access to the same windows through other methods of navigation (for example, the shortcut bar or another window they have access to). They could also access the information through reports or by accessing the tables the information is stored in using another application. Because of this, access rights should be granted or denied for windows, reports, and tables and not by simply limiting navigation.